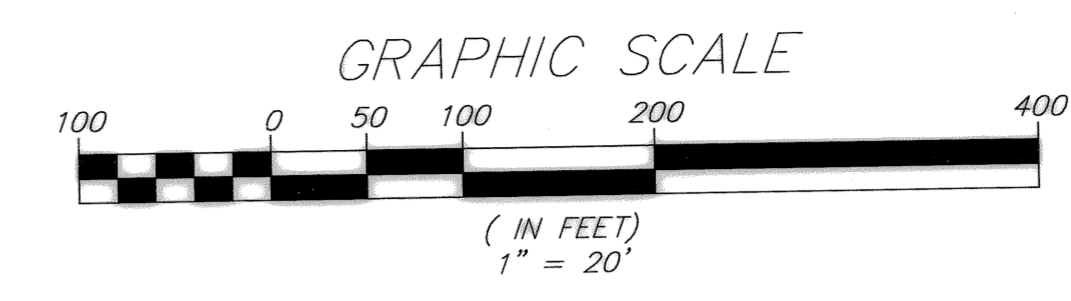


# MECCA CENTER

BEING A REPLAT OF A PORTION OF LOT F, GLENDALE SUBDIVISION,  
 ACCORDING TO THE PLAT THEREOF AS RECORDED IN PLAT BOOK 5, PAGE 39,  
 PUBLIC RECORDS OF PALM BEACH (NOW MARTIN), COUNTY, FLORIDA.  
 LYING IN SECTION 9, TOWNSHIP 38 SOUTH, RANGE 41 EAST  
 CITY OF STUART, MARTIN COUNTY, FLORIDA

**BLOOMSTER PROFESSIONAL LAND SURVEYORS, INC.**

791 N.E. DIXIE HIGHWAY  
 JENSEN BEACH, FLORIDA 34957  
 OFFICE PHONE NO. (772) 334-0868 - FAX NO. (772) 334-5283



**CLERK'S RECORDING CERTIFICATE:**

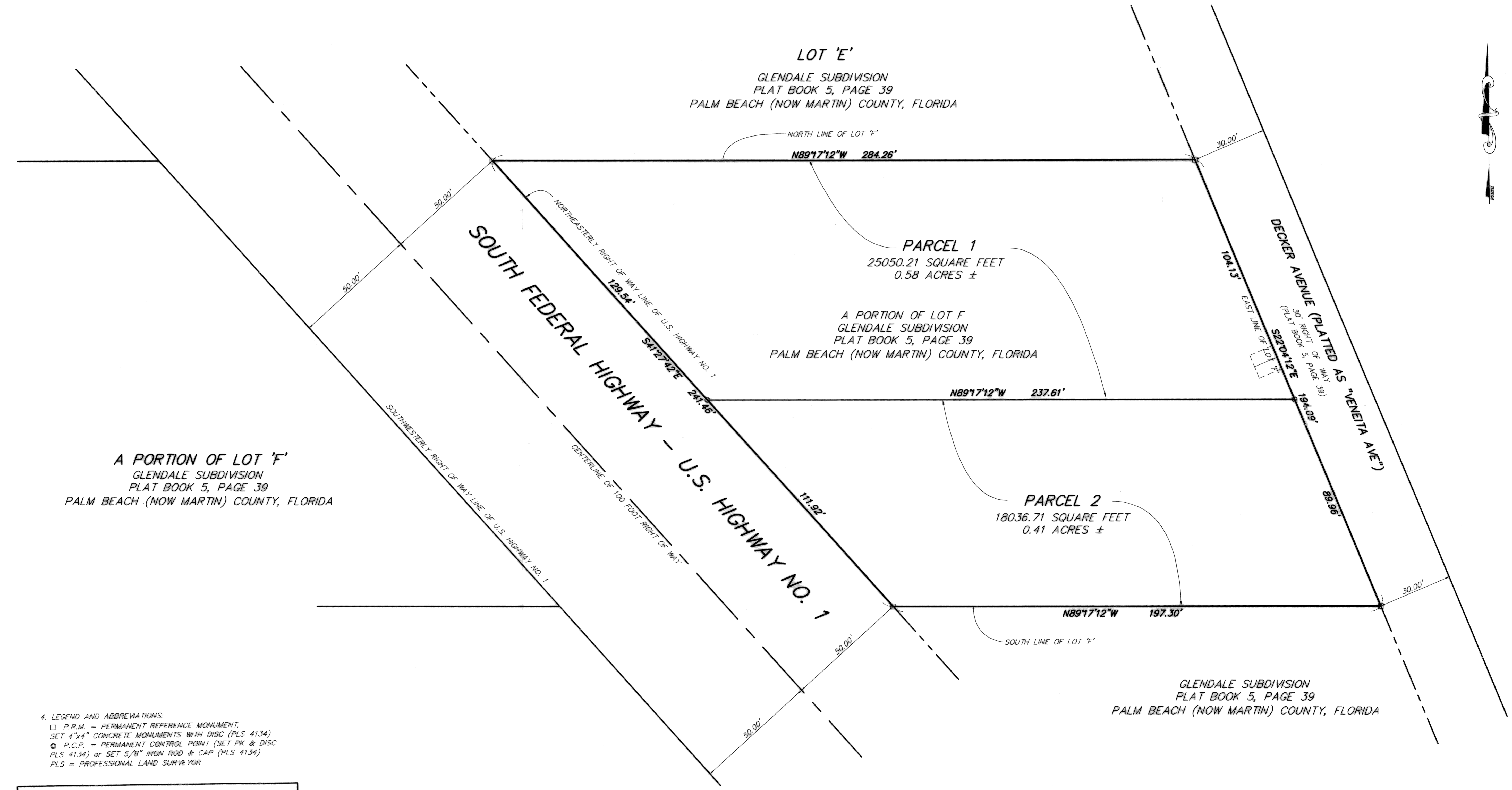
I, MARSHA EWING, CLERK OF THE CIRCUIT COURT OF MARTIN COUNTY, FLORIDA, HEREBY CERTIFY THAT THIS PLAT WAS FILED FOR RECORD IN PLAT BOOK 15, PAGE 93, MARTIN COUNTY, FLORIDA, PUBLIC RECORDS, THIS 3rd DAY OF August, 2004.

MARSHA EWING, CLERK  
 CIRCUIT COURT  
 MARTIN COUNTY, FLORIDA

BY: \_\_\_\_\_ (DEPUTY CLERK (CIRCUIT COURT SEAL))

FILE NO. 1771081

SUBDIVISION PARCEL CONTROL NUMBER:



4. LEGEND AND ABBREVIATIONS:
- P.R.M. = PERMANENT REFERENCE MONUMENT, SET 4"x4" CONCRETE MONUMENTS WITH DISC (PLS 4134)
  - P.C.P. = PERMANENT CONTROL POINT (SET PK & DISC PLS 4134) or SET 5/8" IRON ROD & CAP (PLS 4134)
  - PLS = PROFESSIONAL LAND SURVEYOR

**NOTICE:**  
 THIS PLAT, AS RECORDED IN ITS GRAPHIC FORM, IS THE OFFICIAL DEPICTION OF THE SUBDIVIDED LANDS DESCRIBED HEREIN AND WILL IN NO CIRCUMSTANCES BE SUPPLANTED IN AUTHORITY BY ANY OTHER GRAPHICAL OR DIGITAL FORM OF PLAT. THERE MAY BE ADDITIONAL RESTRICTIONS THAT ARE NOT RECORDED ON THIS PLAT THAT MAY BE FOUND IN THE PUBLIC RECORDS OF THIS COUNTY.